

Riverside Park to Scotts Point

45 mins

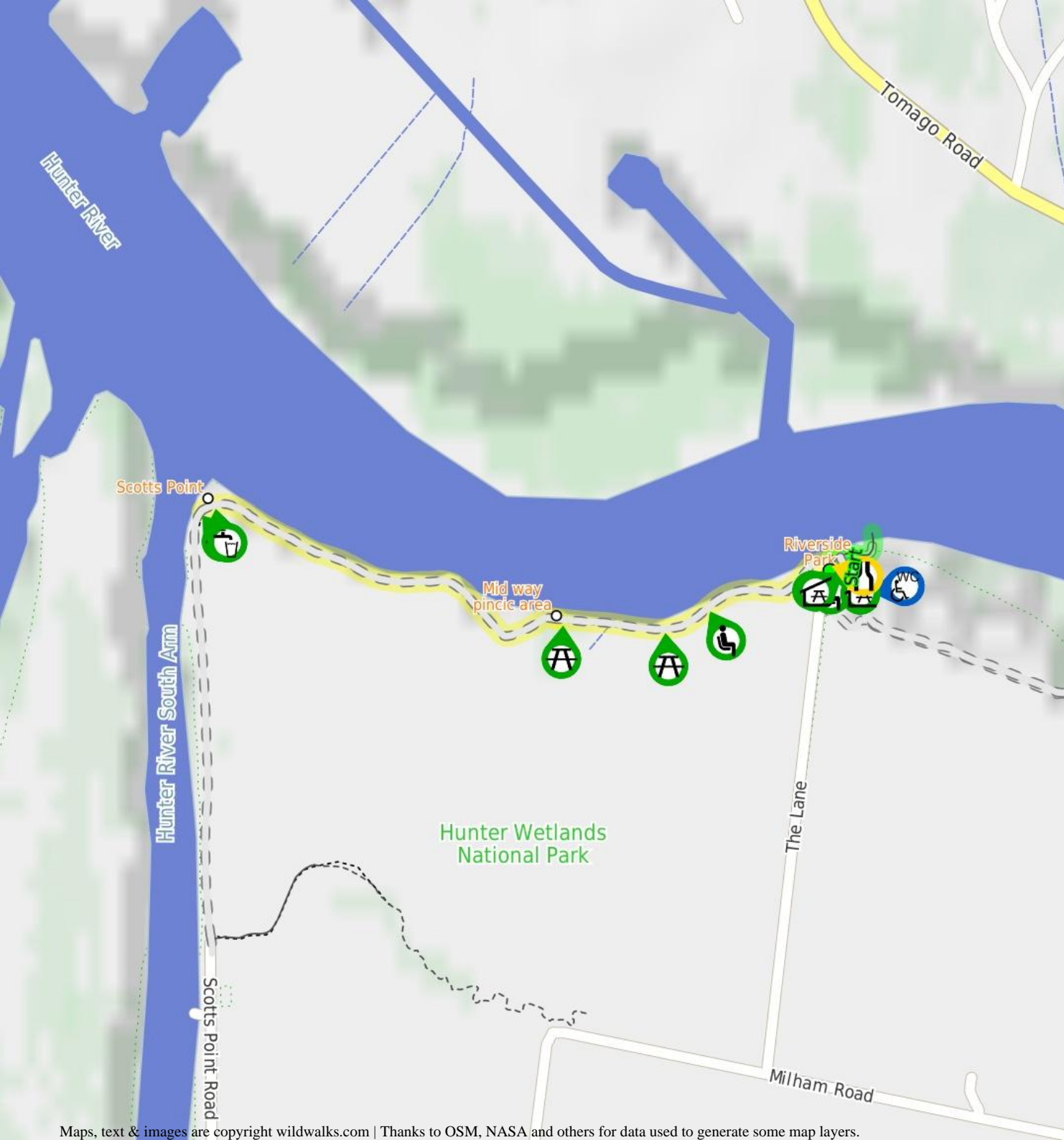
Easy track

2.5 km Return

↑ 0m

2

Explore the bank of the north arm of the Hunter River by following an old road from one picnic area to another. Starting from the well established Riverside Park picnic area, you wander along the mostly flat walk following the asphalt and gravel trail along the banks of the river, through a She Oak forest and beside the wetlands. A great walk for enjoying the birdlife and varied forest along the way. There are a series of picnic tables along the way and a sheltered seating area at Scotts Point. Once you are ready, retrace your steps back to the car.



Are you ready to have fun?

Please ensure you and your group are well prepared and equipped for all possible hazards and delays. Check park closures, weather information and Fire Danger Rating before setting out. Optional side trips and alternate routes noted are not included in this walks overall grade, length or time estimate. Please allow extra time for resting and exploring areas of interest. The authors, staff and owners of wildwalks take care in preparing this information but will not accept responsibility for any inconvenience, loss or injury you may experience. Please take care, have fun - Happy Walking.

Getting there Traveling by car is the only practical way to get to Riverside Park car park (gps: -32.8339, 151.709). Car: There is free parking available.

This is a return walk, so you will finish back at the start.

Find up to date and more information including; travel directions, weather, park closures and walker feedback at <http://wild.tl/rptsp>

0 | Riverside Park car park

(20 m) From the Riverside Park car park at the end of The Lane, Kooragang, this walk heads over the grassy and gravel area through timber bollards for less than 10m to come to an intersection just before the river, marked by a 'Riverside Park' sign.

0.02 | Optional sidetrip to City Farm jetty

(100 m 1 mins) Turn right: From the intersection, this walk follows the gravel track to cross the short fibreglass bridge, keeping the river to the left. After about 10m this walk comes to a 3-way intersection with a gravel footpath, marked by an arrow post sign. Continue straight: From the intersection, this walk follows the 'Jetty' arrow along the gravel path keeping the river to the left. After about 40m the path leads past a sheltered picnic area and water tap (on the right) then continues for about 30m to come to a 'Hunter Wetlands National Park' information sign (on the right). Here the walk leads onto the floating jetty ramp with 1m metal fence that leads to the City Farm jetty (there is an 8cm step to access the actual jetty platform. At the end of this side trip, retrace your steps back to the main walk then Continue straight.

0.02 | Riverside Park

Riverside Park is found near the end of 'The Lane', Kooragang within Hunter Wetlands National Park. There is the City Farm jetty on the banks of the north arm of the Hunter River. You will also find two picnic shelters, each with a water tank. There is also an accessible toilet at the back of the grassy area. There are a few walks that leave from the area and it is also a popular fishing and bird watching area.

0.02 | Riverside Park car park int

(530 m 8 mins) Turn left : From the intersection, this walk leads over the grassy section between the car park and river, keeping the river to the right. At the far end of the car park the walk leads past the stone seats then follows the 'Scotts Point' arrow under the power lines, turning right at the intersection and following the

asphalt trail for about 210m to pass a timber seat (on the left). The walk continues along the trail for another 90m to pass a single picnic table. The walk continues along the trail beside the river for another 180m to find the mid way picnic area with 2 picnic tables (on the left), just before the timber bridge.

0.55 | Mid way picnic area

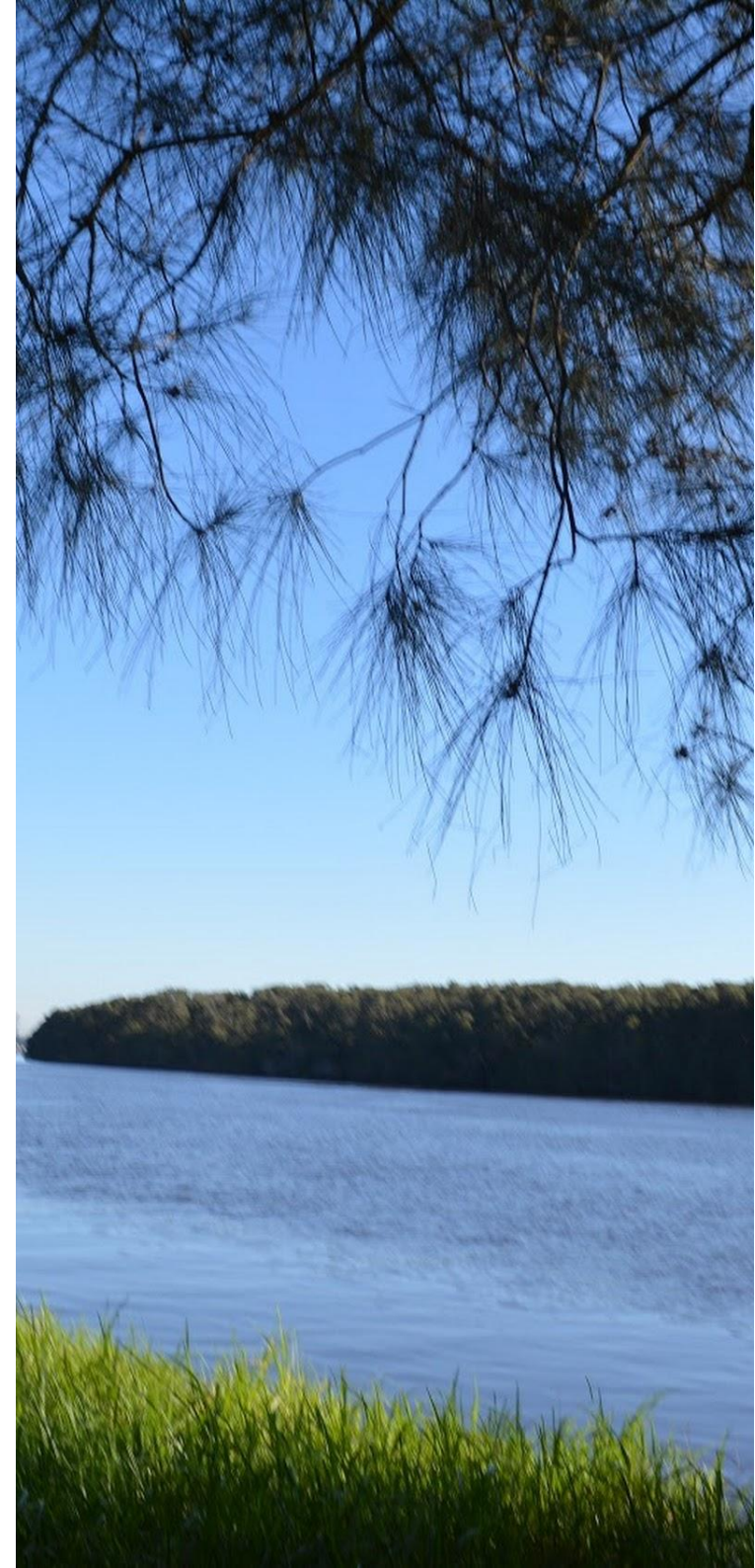
This relaxed picnic area is found on the banks of the north arm of the Hunter River nestled among She Oaks and the wetlands. There are two picnic tables on concrete slabs beside the trail. The grassy area around the tables can become boggy after rain or very high tides. A pleasant naturally shaded area with some protection from light winds.

0.55 | Mid way picnic area

(700 m 11 mins) Continue straight: From the picnic area, this walk follows the old road over the 2.7m wide timber bridge, keeping the river to the right. Over the next 200m the walk leads past a series of large orange triangle boat navigation markers with lovely views over the river. The walk continues along the old road for another 250m to pass a 'Scotts Point Way' sign where there are more views of the wetlands (to the left) The walk continues for another 220m to come to the open grassy area and Scotts Point picnic area, marked with 3 signs (close to the water on the right), a picnic table (on the left) and a sheltered sitting area with a water tap. There are beautiful views of the confluence of two water ways with a view across a shipping area and a bridge and distant views of the mountains.

1.25 | Scotts Point

Scotts Point is home to a water tank, picnic table and seating shelter beside an open grassy area at the confluence of the north and south arms of the Hunter River. There are views down the river to Hexham bridge and past some shipping areas. There are a series of signs to explain more about the local area. This is a lovely spot to rest and enjoy the river and the wetlands.





This page is designed to give you a sense of the facilities that help improve access for people with disabilities or mobility restrictions. See tracknotes and map for navigation, point of interest and other information. See the Accessibility Details page for specific information about each facility.

Parking: There are 0 designated accessible parking areas on this walk.

Toilets: There are 0 toilets on this walk.

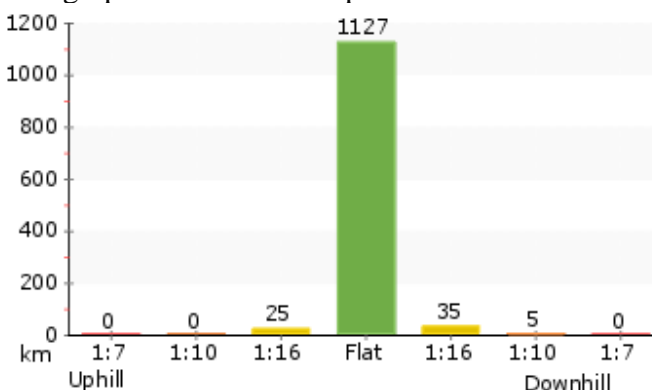
Seats: There are 6 seats on this walk. They are on average 250m apart, with a maximum gap of 690m.

Surface

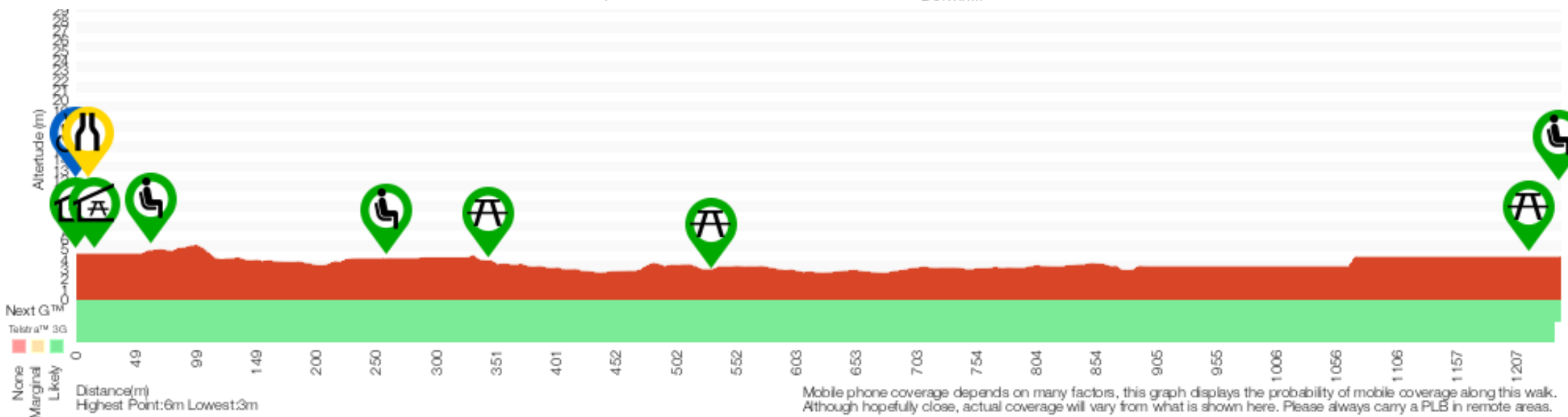
The majority of this walk follows an old (closed to cars) asphalt road, about half the road is now a compacted gravel trail. There is one timber bridge about halfway. Some sections will become boggy after heavy rain.

Steepness

This walk is mostly flat less than 1:12 steep. This graph shows how steep the track is.



Grade 2/6 Easy track	
Length	2.5 km Return
Time	45 mins
Quality of track	Clear and well formed track or trail (2/6)
Signs	Clearly signposted (1/6)
Experience Required	No experience required (1/6)
Weather	Weather generally has little impact on safety (1/6)
Infrastructure	Generally useful facilities (such as fenced cliffs and seats) (1/6)



Mobile phone coverage depends on many factors, this graph displays the probability of mobile coverage along this walk. Although hopefully close, actual coverage will vary from what is shown here. Please always carry a PLB in remote areas.



1 Picnic Shelter (0m)
A timber slat picnic table and bench seat under roof. The table is 79cm high, 92cm deep and 2.1m wide. The seats are 46cm high, 28cm deep and 2.1m wide (no backrest). The table is on a (6x6m) concrete slab. There is a second similar table opposite not in a shelter.



3 Potable Water (0m)
Water tank beside picnic shelter. Treat water before use. Tap 60cm high on concrete slab.



5 Picnic Shelter (20m)
A timber slat picnic table and bench seat under roof. The table is 79cm high, 73cm deep and 2.1m wide. The seats are 46cm high, 44cm deep and 2.1m wide (no backrest). The table is on a (6x6m) concrete slab.



7 Seat (60m)
Three sandstone bench seats, 57cm high, 40cm deep and 2.05m wide with no arm or backrest.



9 Picnic Table (350m)
A timber slat picnic table and bench seat. The table is 86cm high, 70cm deep and 1.8m wide. The seats are 47cm high, 22cm deep and 1.8m wide (no backrest). With some shade from a tree, on a (4.2x4.2m) concrete slab 4m from trail.



11 Picnic Table (1220m)
A timber slat picnic table and bench seat. The table is 86cm high, 70cm deep and 1.8m wide. The seats are 47cm high, 22cm deep and 1.8m wide (no backrest). With some shade from a tree, on a (4.2x4.2m) concrete slab beside trail.



13 Seat (1240m)
Three timber slat bench seats in a roofed shelter (4x4m), seats are 44cm high, 29cm deep and 2m wide with 40cm high fence as backrest. Entrance is 1.7m wide with a 7cm step.



2 Toilet Accessible (0m)
Shared male/female accessible toilet. Entrance is 85cm wide, no hand basin, toilet seat 47cm high with a 87cm high handrail, in a 3x2m room.



4 Pinch Point (10m)
Plastic bollard pinch points around the edge of the carpark. The largest gap between the bollard is 1.3m, 90cm high.



6 Potable Water (20m)
Water tank beside picnic shelter. Treat water before use. Tap 60cm high on concrete slab.



8 Seat (260m)
A timber bench seat, 53cm high, 19cm deep and 1.9m wide with no arm or backrest.



10 Picnic Table (530m)
Two timber slat picnic tables and bench seats. The tables are 86cm high, 70cm deep and 1.8m wide. The seats are 47cm high, 22cm deep and 1.8m wide (no backrest). With some shade from a tree, on a (4.2x4.2m) concrete slab 4m from trail.



12 Potable Water (1240m)
Tank water (treating water is recommended before use). Tap is 60cm high with gap of 1m between tap and shelter, there is a 9cm step to access the concrete slab.