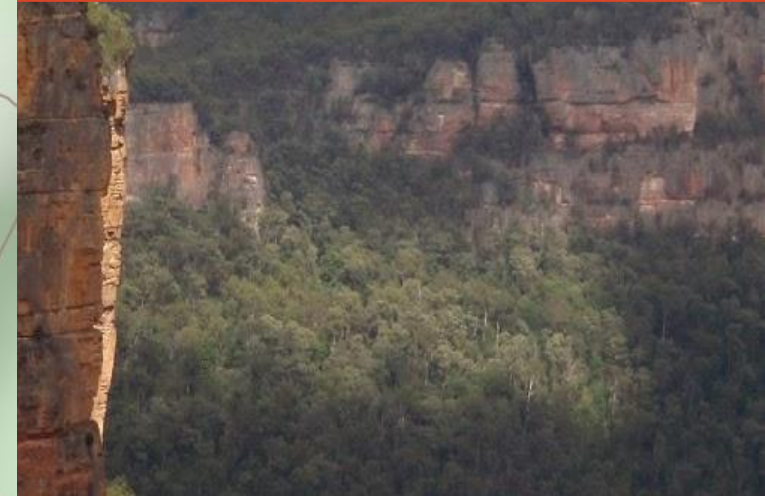
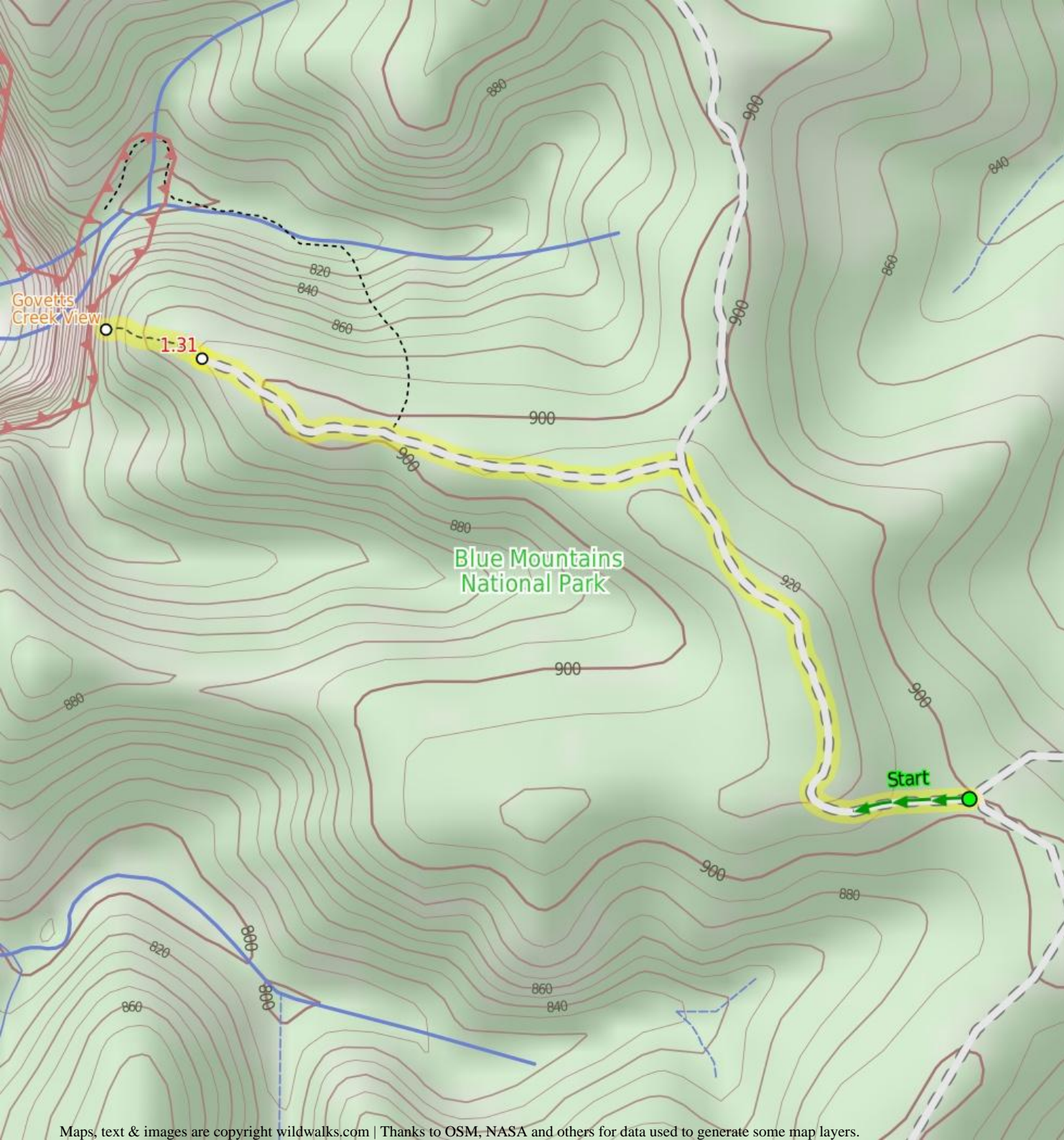


Govetts Creek Lookout



1 hr 30 mins

Moderate track

3

2.9 km Return

↑ 115m

This side trail from Fortress Ridge provides access to a fantastic lookout with breathtaking views along the valley and of the amazing sandstone cliffs. The walk to the lookout is mostly along management trails through the lovely heath. The views from the lookout extend across the large valley (Govetts Creek) to the cliffs on the other side, including to Pulpit Rock.

859m

929m

Blue Mountains National Park

Are you ready to have fun?

Please ensure you and your group are well prepared and equipped for all possible hazards and delays. Check park closures, weather information and Fire Danger Rating before setting out. Optional side trips and alternate routes noted are not included in this walks overall grade, length or time estimate. Please allow extra time for resting and exploring areas of interest. The authors, staff and owners of wildwalks take care in preparing this information but will not accept responsibility for any inconvenience, loss or injury you may experience. Please take care, have fun - Happy Walking.

Getting there Traveling by car is the only practical way to get to Fortress Ridge car park (gps: -33.6581, 150.3642). Car: There is free parking available.

This is a return, so you will finish back at the start.

Find up to date and more information including; travel directions, weather, park closures and walker feedback at <http://wild.tl/gcl>

0 | Fortress Ridge car park

(1.3 km 26 mins) From the car park (and 'Fortress Ridge' sign), this walk heads around the gate and up the hill. The management trail swings right for approximately 50m then turns left. The trail leads to an area of low heath, then tends right (down the hill) for approximately 100m before coming to an intersection.

Turn left: From the intersection the track heads down the trail which tends off to the left. The track continues winding away from the main trail as it winds down the spur. The track soon opens into a low heath area, out of the bush, where the track becomes more overgrown. As the track continues down the hill it reaches a caldasac with a large bush in the centre of it. Behind the bush is the start of the bushtrack.

1.31 | Govetts Ck Lookout Trk

(120 m 4 mins) Continue straight: From the intersection the track heads down the hill, away from the management trail. The track heads down towards the valley, winding down the hillside and onto a rock platform overlooking the valley.

1.44 | Govetts Creek View

Govetts Creek View, in the Blue Mountains National Park is high on the escarpment above Govetts Creek. This informal unfenced lookout is at the top of the cliff line forming the south east corner of the large canyon. There are stunning views across the valley, and of the surrounding sandstone cliffs. A place well worth visiting.

